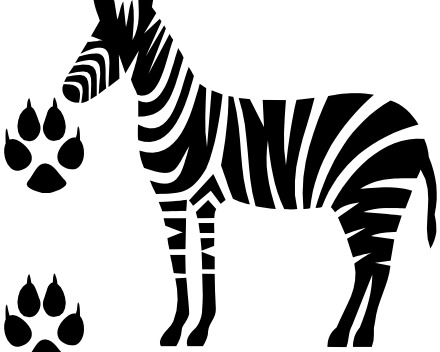
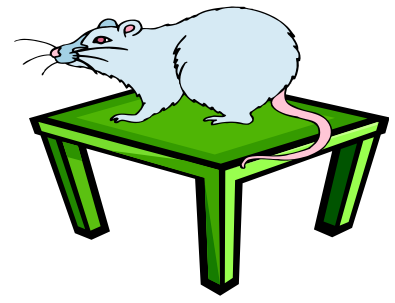
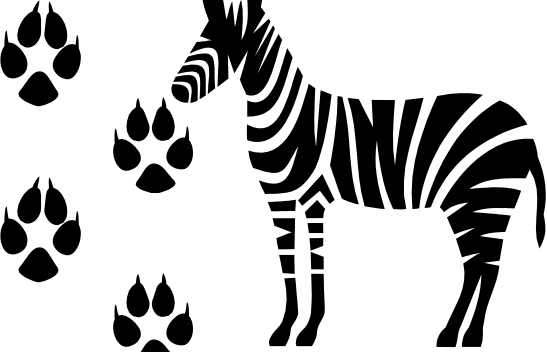


# Sentences



- 1. The Pizza in the box is mine.
- 2. The girl in the house is my sister.
- 3. The runners raced around the track.
- 4. I sat with my friends.
- 5. After the Gym classes, I went to my house.



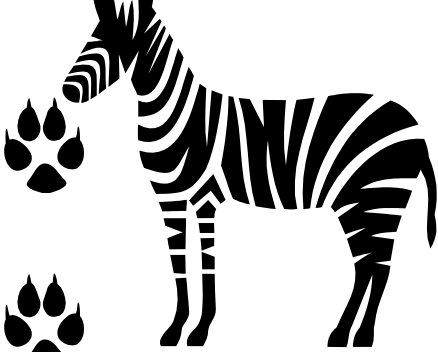
LA 1 2



*The mouse is on the table.*

Two things: mouse + table  
Relationship: one is on the other

On is a preposition!

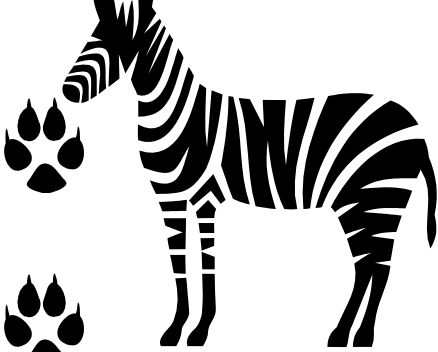


A preposition is a part of speech that shows a relationship between two things.

Location (on, under, in)

Timing (before, after, during)

Direction (from, toward, to)

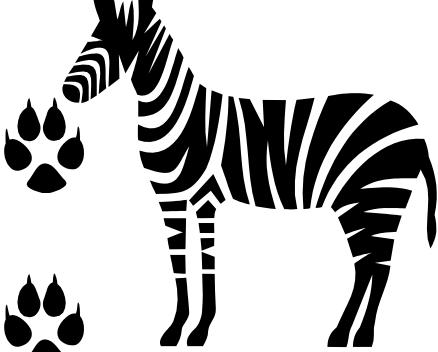


# Preposition



A preposition sits before a noun or a pronoun to show the noun's relationship to another word in the sentence.

The following are examples of prepositions: *in, on, at, around, above, near, of, and for.*



In, on, under, behind,  
above, before, after,  
during, near, with, up,  
down, from, for, to